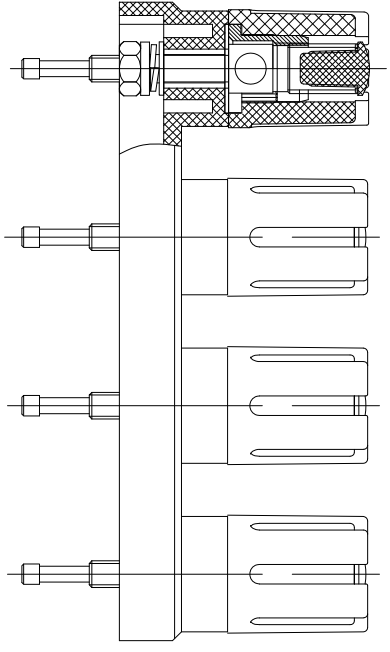
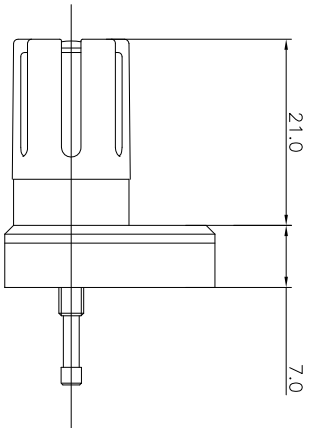
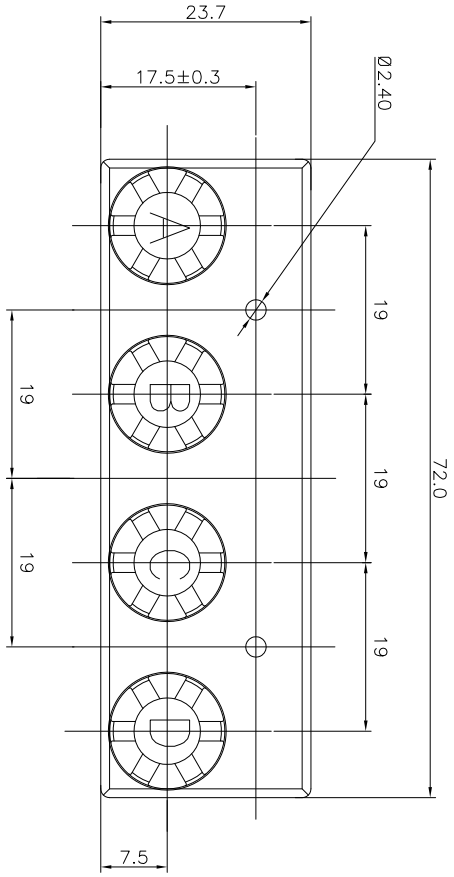


REV.	ECN NO.	MODIFIED MARK	APPROVED
A	—	FIRST RELEASE	





NOTES:

ELECTRICAL:

- 1:RATED CURRENT: 3A Max.
- 2:RATED VOLTAGE: 50V AC.
- 3:INSULATION RESISTANCE: 100 MEGAOHMS Min.
- 4:DIELECTRIC WITHSTANDING VOLTAGE: 1200 VAC Min.

MECHANICAL:

- 1:WIRE IN HOLD FORCE 5N (20#WIRE) MIN
- 2:INSPECTED VOLTAGE, AT THE SPEED OF 6-10S PER MINUTES, THE SAMPLES ARE INSPECTED 10000 CYCLES, BUT THERE ARE NO DAMAGE ON THE PRESSURE AND THE RISING TEMPERATURE, ETC.
- 3:APPLY 2kgf FORCE AT ANY DIRECTION , THERE NO LOOSE & NO CRACK

ANGLE	±5°	MODEL NAME: WP4-24	 广东正宝科技有限公司 GUANGDONG TRENPRO TECHNOLOGY CO., LTD.
63 < L	±0.5	(PART NO.)	
16 < L ≤ 63	±0.4		
4 < L ≤ 16	±0.3		
L ≤ 4	±0.2		
TOL TABLE:		MAT'L: DESIGN: X.H.Wang 11/06'18	TITLE: WP PUSH TERMINAL
THIS DOCUMENT IS THE PROPERTY OF TRENPRO TECHNOLOGY CO., LTD. NO PART THEREOF MAY BE REPRODUCED AND USED WITHOUT THE PRIOR WRITTEN CONSENT OF THE OWNER		FINISH: CHECKED: L.W.Wu 11/06'18	DWG NO.:
		Q'TY: /	UNIT: mm
		APPROVED: X.Q.Hu 11/06'18	VIEW: 
			SCALE: 5:1
			SHEET: 1/1
			SIZE: A3

