

REV.	ECN NO.	MODIFIED MARK	APPROVED
A		FIRST RELEASE	

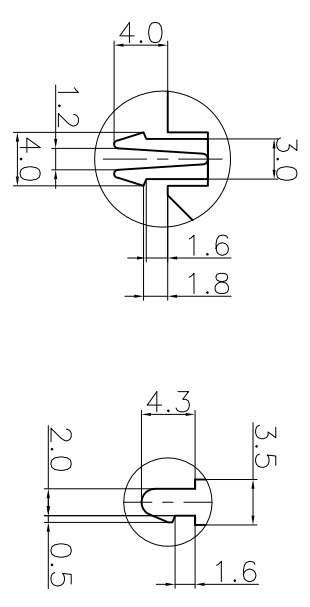
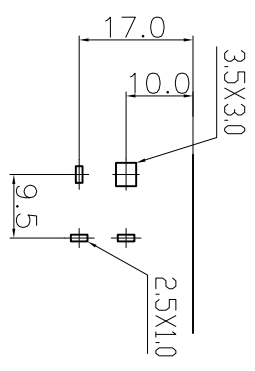
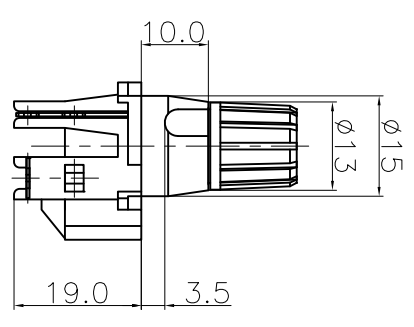
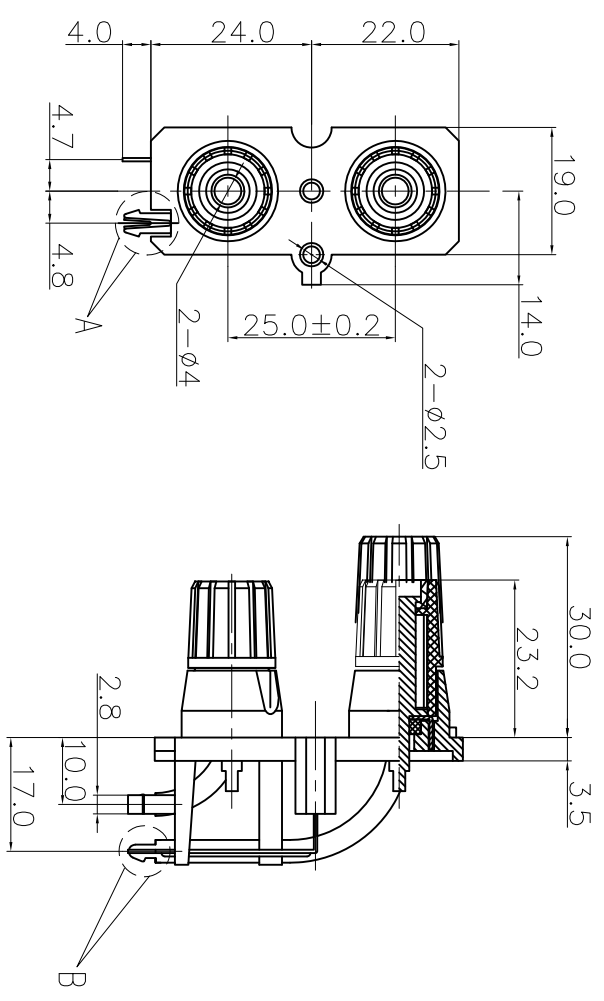
NOTES:

ELECTRICAL:

- 1: RATED CURRENT: 3A Max.
- 2: RATED VOLTAGE: 50V AC.
- 3: INSULATION RESISTANCE: 100 MEGOHMS Min.
- 4: DIELECTRIC WITHSTANDING VOLTAGE: 1200 VAC Min.

MECHANICAL:


- 1: WIRE IN HOLD FORCE 5N (20#WIRE) MIN
- 2: INSPECTED VOLTAGE, AT THE SPEED OF 6-10S PER MINUTES, THE SAMPLES ARE INSPECTED 10000 CYCLES, BUT THERE ARE NO DAMAGE ON THE PRESSURE AND THE RISING TEMPERATURE, ETC. 3: APPLY 2kgf FORCE AT ANY DIRECTION, THERE NO LOOSE & NO CRACK



PCB LAYOUT
TOP VIEW

DETAIL A
SCALE:2:1

DETAIL B
SCALE:2:1

ANGLE	±5°	MODEL NAME: WP2-26	 广东正宝科技有限公司 GUANGDONG TRENPPO TECHNOLOGY CO., LTD.	TITLE: WP PUSH TERMINAL	REV.: A
63 < L	±0.5	(PART NO.)		DWG NO.:	SIZE: A3
16 < L ≤ 63	±0.4	MAT'L: See table	DESIGN: X.H.Wang 09/22'18	SCALE: SHEET: 1/1	
4 < L ≤ 16	±0.3	FINISH: See table	CHECKED: L.W.Wu 09/22'18	VIEW: 5:1	
L ≤ 4	±0.2	Q'TY: /	APPROVED: X.Q.Hu 09/22'18	UNIT: mm	
TOL TABLE:		THIS DOCUMENT IS THE PROPERTY OF ZHENWEN ELECTRONICS CO.,LTD. AND THEREON MAY BE REPRODUCED AND USED WITHOUT THE PRIOR WRITTEN CONSENT OF THE OWNER			