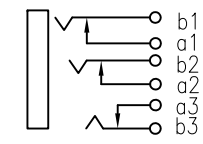
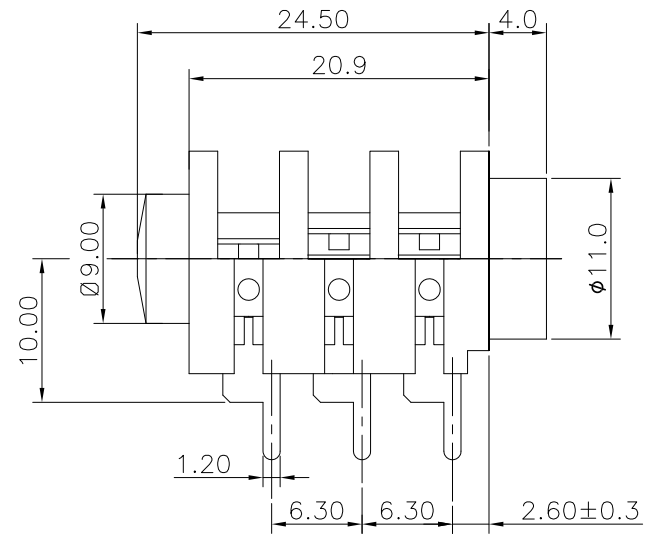
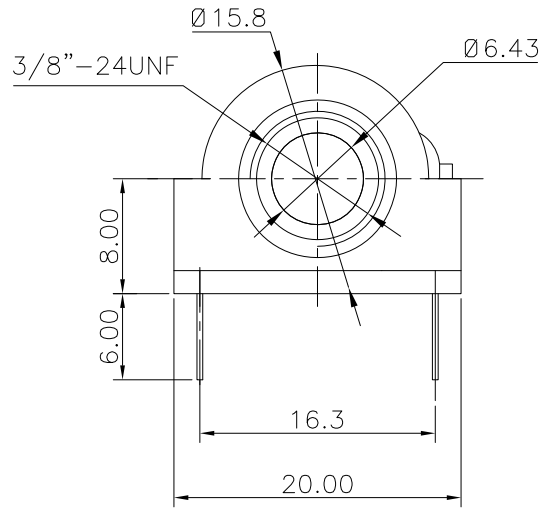
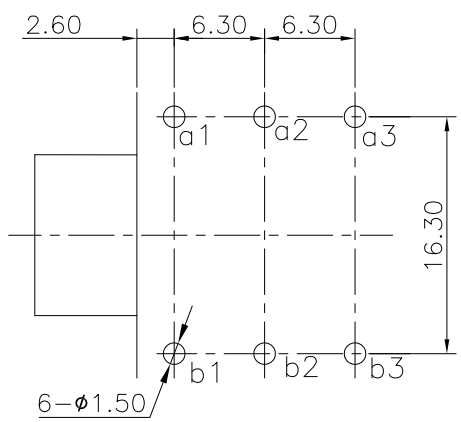


|      |         |               |          |
|------|---------|---------------|----------|
| REV. | ECN NO. | MODIFIED MARK | APPROVED |
| A    | —       | FIRST RELEASE |          |


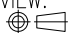


SCHEMATIC



PCB LAYOUT  
TOP VIEW

- NOTES:
- ELECTRICAL:
- 1:RATED CURRENT: 1A Max.
  - 2:RATED VOLTAGE: 50V AC.
  - 3:CONTACT RESISTANCE: 100 MILLIOHMS Max.  
AFTER TESTING:100 MILLIOHMS Max.
  - 4:INSULATION RESISTANCE: 100 MEGAOHMS Min.
  - 5:DIELECTRIC WITHSTANDING VOLTAGE: 500 VAC Min.
- MECHANICAL:
- 1:INSERTION FORCE: 5N-40N.
  - 2:WITHDRAWAL FORCE: 5N-40N.
  - 3:DURRABILITY: 5000 CYCLES.
- ENVIRONMENTAL:
- TEMPERATURE RANGE: -20°C TO 60°C.

|  |      |                                      |   |                        |   |
|--|------|--------------------------------------|---|------------------------|---|
| ANGLE  | ±5°  | MODEL NAME: SJ6351E-6P<br>(PART NO.) |  广东正宝科技有限公司<br>GUANGDONG TRENPRO TECHNOLOGY CO. LTD. |                        |   |
| 63 < L   | ±0.5 |                                      |   |                        |   |
| 16 < L ≤ 63  | ±0.4 |                                      |   |                        |   |
| 4 < L ≤ 16   | ±0.3 |                                      |   |                        |   |
| L ≤ 4  | ±0.2 | MAT'L:<br>See table                  | DESIGN: Z.F.Lian 08/15'18   | TITLE: 6.35 PHONE JACK |   |
| TOL TABLE:   |      | FINISH:<br>See table                 | CHECKED: L.W.Wu 08/15'18  | DWG NO.:               | REV.:<br>A  |
| THIS DOCUMENT IS THE PROPERTY OF TRENPRO TECHNOLOGY CO. LTD.,NO PART THEREOF MAY BE REPRODUCED AND USED WITHOUT THE PRIOR WRITTEN CONSENT OF THE OWNER |      | Q'TY: /                              | APPROVED: X.Q.Hu 08/15'18   | UNIT: mm               | VIEW:  |
|  |      |                                      |   | SCALE: 5:1             | SHEET: 1/1  |
|  |      |                                      |   |                        | SIZE: A3  |