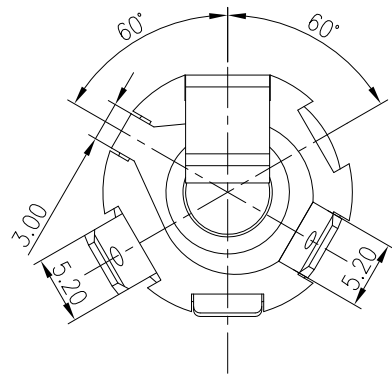
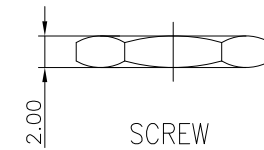
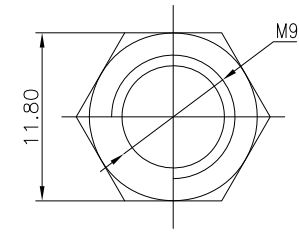


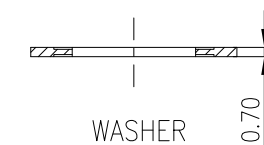
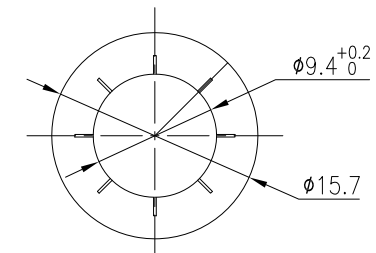
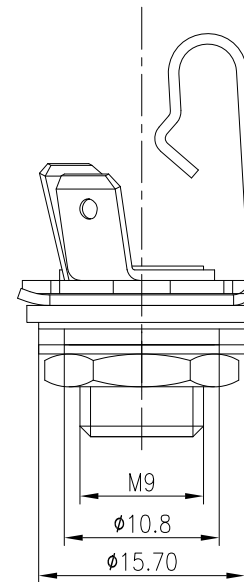
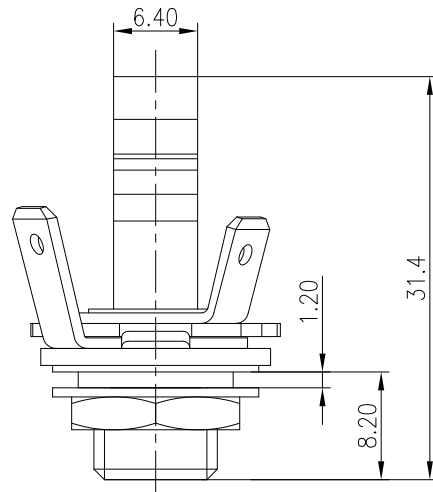
| | | | |
|------|---------|---------------|----------|
| REV. | ECN NO. | MODIFIED MARK | APPROVED |
| A | — | FIRST RELEASE | |



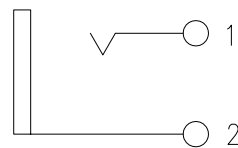
NOTES:
 ELECTRICAL:
 1:RATED CURRENT: 1A Max.
 2:RATED VOLTAGE: 50V AC.
 3:CONTACT RESISTANCE: 100 MILLIOHMS Max.
 AFTER TESTING:100 MILLIOHMS Max.
 4:INSULATION RESISTANCE: 100 MEGAOHMS Min.
 5:DIELECTRIC WITHSTANDING VOLTAGE: 500 VAC Min.
 MECHANICAL:
 1:INSERTION FORCE: 5N-40N.
 2:WITHDRAWAL FORCE: 5N-40N.
 3:DURRABILITY: 5000 CYCLES.
 ENVIRONMENTAL:
 TEMPERATURE RANGE: -20°C TO 60°C.



SCREW



WASHER



SCHEMATIC

| | |
|--------------------------------------------------------------------------------------------------------------------------------------------------------|---------------|
| ANGLE | $\pm 5^\circ$ |
| $63 < L$ | ± 0.5 |
| $16 < L \leq 63$ | ± 0.4 |
| $4 < L \leq 16$ | ± 0.3 |
| $L \leq 4$ | ± 0.2 |
| TOL TABLE: | |
| THIS DOCUMENT IS THE PROPERTY OF TRENPRO TECHNOLOGY CO. LTD.,NO PART THEREOF MAY BE REPRODUCED AND USED WITHOUT THE PRIOR WRITTEN CONSENT OF THE OWNER | |

MODEL NAME: SJ6348C
(PART NO.)



广东正宝科技有限公司
GUANGDONG TRENPRO TECHNOLOGY CO. LTD.

| | | | | |
|----------------------|---------------------------|------------------------|-----------|------------|
| MAT'L: See table | DESIGN: X.H.Wang 09/20'18 | TITLE: 6.35 PHONE JACK | | |
| FINISH: See table | CHECKED: L.W.Wu 09/20'18 | DWG NO.: | | REV.: A |
| Q'TY: / | APPROVED: X.Q.Hu 09/20'18 | UNIT: mm | VIEW: | SCALE: 5:1 |
| | | | | SHEET: 1/1 |
| | | | | SIZE: A3 |