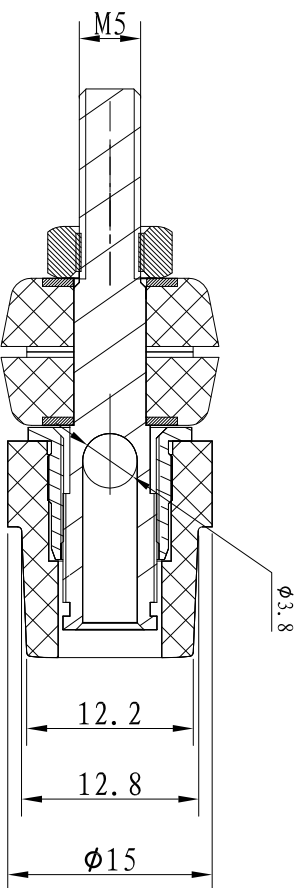
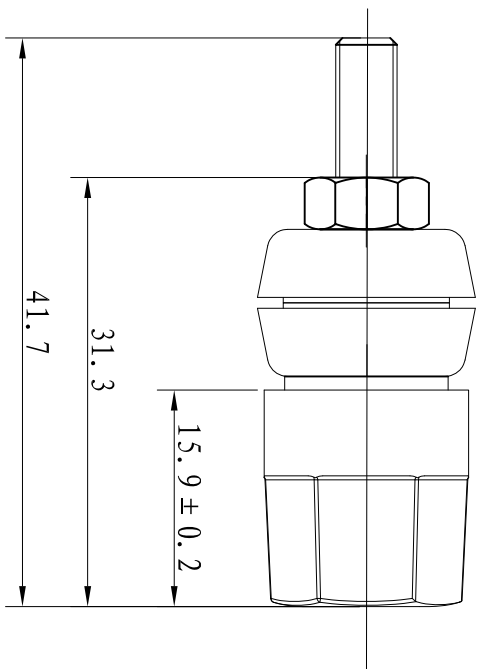
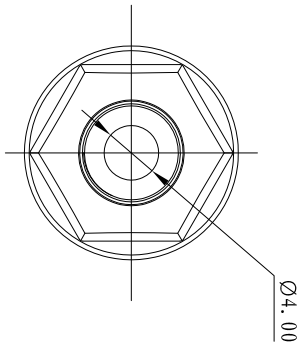


REV.	ECN NO.	MODIFIED MARK	APPROVED
A		FIRST RELEASE	

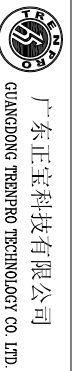


- NOTES:
- ELECTRICAL:
- 1:RATED CURRENT: 3A Max.
 - 2:RATED VOLTAGE: 50V AC.
 - 3:INSULATION RESISTANCE: 100 MEGAOHMS Min.
 - 4:DIELECTRIC WITHSTANDING VOLTAGE: 1200 VAC Min.
- MECHANICAL:
- 1:WIRE IN HOLD FORCE 5N (20#WIRE) MIN
 - 2:INSPECTED VOLTAGE, AT THE SPEED OF 6-10S PER MINUTES, THE SAMPLES ARE INSPECTED 10000 CYCLES, BUT THERE ARE NO DAMAGE ON THE PRESSURE AND THE RISING TEMPERATURE, ETC.3:APPLY 2kgf FORCE AT ANY DIRECTION , THERE NO LOOSE & NO CRACK

ANGLE	±5°
63 < L	±0.5
16 < L ≤ 63	±0.4
4 < L ≤ 16	±0.3
L ≤ 4	±0.2

TOL TABLE:
 THIS DOCUMENT IS THE PROPERTY OF
 TERPRO TECHNOLOGY CO., LTD.,NO PART
 THEREOF MAY BE REPRODUCED AND
 USED WITHOUT THE PRIOR WRITTEN
 CONSENT OF THE OWNER

MODEL NAME: WP1-20 (PART NO.)	DESIGN: X.H.Wang 09/13'18	TITLE: WP PUSH TERMINAL
FINISH: See table	CHECKED: L.W.Wu 09/13'18	DWG NO.:
QTY: /	APPROVED: X.Q.Hu 09/13'18	UNIT: mm



APPROVED: X.Q.Hu 09/13'18	UNIT: mm	VIEW:	SCALE: 5:1	SHEET: 1/1	SIZE: A3
---------------------------	----------	-------	------------	------------	----------