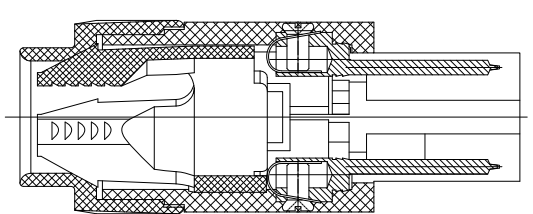
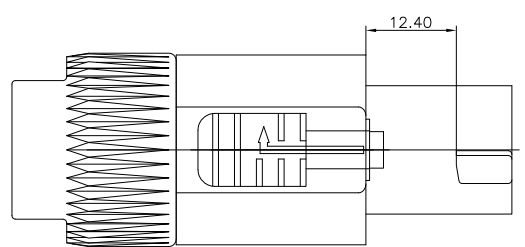
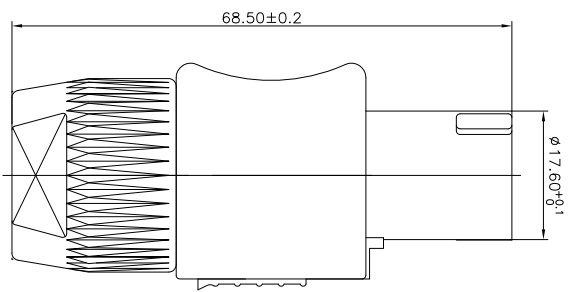
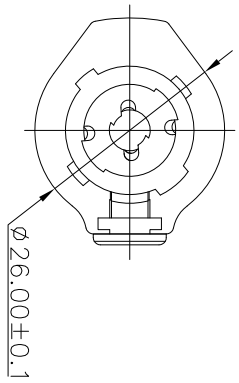



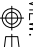
REV.	ECON NO.	MODIFIED MARK	APPROVED
A	—	FIRST RELEASE	



NOTES:
 ELECTRICAL:
 1: RATED CURRENT: XLR: 20 A MAX JACK: 15 A MAX
 2: RATED VOLTAGE: XLR: 250 V AC JACK: 250 V AC
 3: CONTACT RESISTANCE: 30 MILLIOHMS MAX.
 4: INSULATION RESISTANCE: 1 G OHMS MIN.
 5: DIELECTRIC WITHSTANDING VOLTAGE: 1000 VAC MIN.
 MECHANICAL:
 1: INSERTION FORCE: 5N~20N
 2: WITHDRAWAL FORCE: 5N~20N.
 4: DURABILITY: 1000 CYCLES.

ANGLE	$\pm 5^\circ$	MODEL NAME: PLE4-02 (PART NO.)	 广东正宝科技有限公司 GUANGDONG TRENPPO TECHNOLOGY CO. LTD.
63 < L	± 0.5	MAT'L: See table	
16 < L ≤ 63	± 0.4	FINISH: See table	TITLE: PLE PLUG
4 < L ≤ 16	± 0.3	DESIGN: X.H.Wang 09/19'18	CHECKED: L.W.Wu 09/19'18
L ≤ 4	± 0.2	APPROVED: X.Q.Hu 09/19'18	DWG NO.:

TOL TABLE:
 THIS DOCUMENT IS THE PROPERTY OF
 TRENPPO TECHNOLOGY CO. LTD.
 NO PART HEREOF MAY BE REPRODUCED
 AND USED WITHOUT THE PRIOR WRITTEN
 CONSENT OF THE OWNER

Q'TY: /
 UNIT: mm
 VIEW: 
 SCALE: 5:1
 SHEET: 1/1
 SIZE: A3
 REV: A