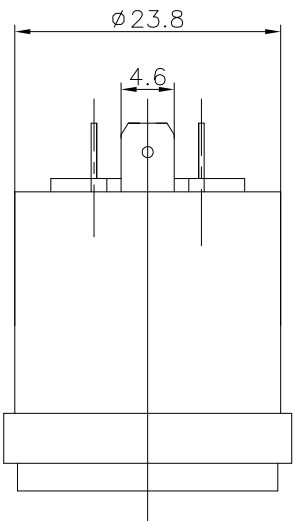
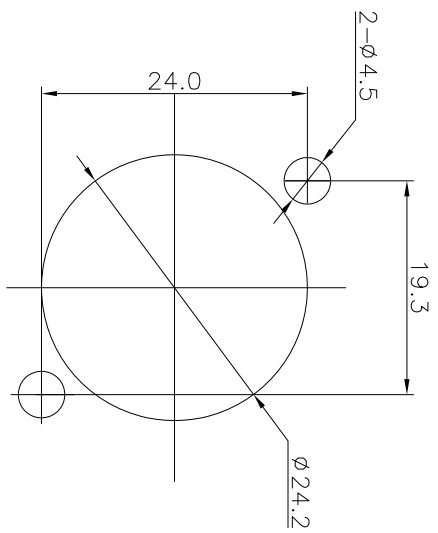
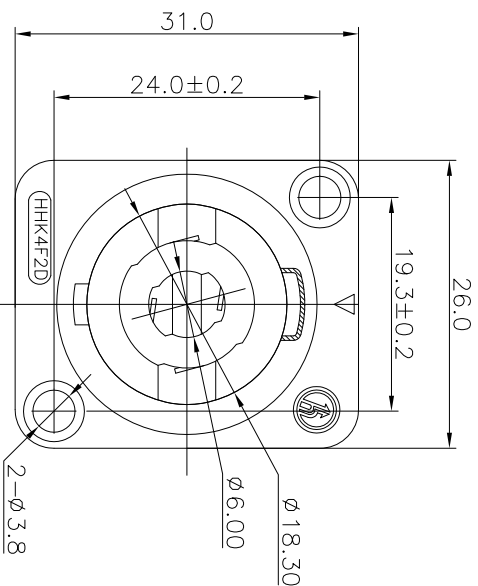
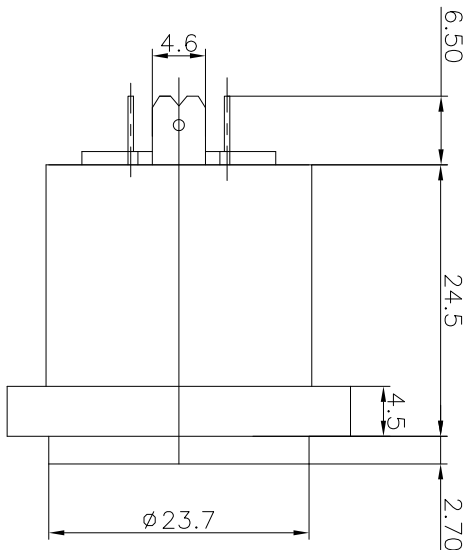
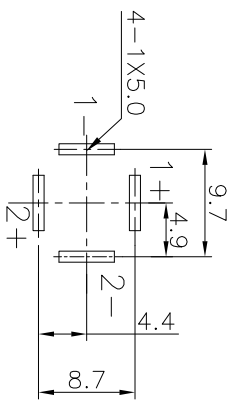
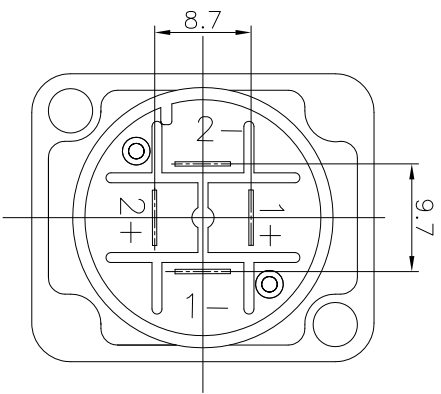


REV.	ECN NO.	MODIFIED MARK	APPROVED
A		FIRST RELEASE	



NOTES:
 ELECTRICAL:
 1: RATED CURRENT: XLR: 20 A MAX JACK: 15 A MAX
 2: RATED VOLTAGE: XLR: 250 V AC JACK: 250 V AC
 3: CONTACT RESISTANCE: 30 MILLIOHMS MAX.
 4: INSULATION RESISTANCE: 1 G OHMS MIN.
 5: DIELECTRIC WITHSTANDING VOLTAGE: 1000 VAC MIN.
 MECHANICAL:
 1: INSERTION FORCE: 5N~20N
 2: WITHDRAWAL FORCE: 5N~20N,
 4: DURRABILITY: 1000 CYCLES.



PCB LAYOUT
TOP VIEW

ANGLE	±5°
63 < L	±0.5
16 < L ≤ 63	±0.4
4 < L ≤ 16	±0.3
L ≤ 4	±0.2

MODEL NAME: SPE-01 (PART NO.)		TITLE: SPEAKON SERIES	
DESIGN: Z.F.LIAN		DWG NO.:	
CHECKED: L.W.Wu		10/24'18	
APPROVED: X.Q.Hu		10/24'18	
QTY: /	UNIT: mm	VIEW: 5:1	SCALE: SHEET: 1/1
REV.:		A	
SIZE: A3			

广东正宝科技有限公司
 GUANGDONG TREANPRO TECHNOLOGY CO. LTD.

TOL TABLE:
 THIS DOCUMENT IS THE PROPERTY OF
 TREANPRO TECHNOLOGY CO.LTD.,NO
 PART THEREOF MAY BE REPRODUCED AND
 USED WITHOUT THE PRIOR WRITTEN
 CONSENT OF THE OWNER